

BUILT ENVIRONMENT



BACHELOR OF DESIGN IN INTERIOR DESIGN



INSCAPE



COURSE INTRODUCTION

The Bachelor of Design in Interior design offers students **a sound foundation in Interior Design**, meaning that they **are qualified and have the skills to work in this field**. The programme **produces graduates that are capable of thinking on their feet, who can produce innovative and edgy designs that make a positive impact on the world**. Students can major in either social, environmental or commercial design allowing for students to focus on one area of expertise for their future careers. Students are educated and informed on addressing the theories, professional practices and experiential learning of interior design. Students learn to problem solve in various contexts and may continue their studies at a postgraduate level.

COURSE OVERVIEW

- Encompasses **planning and designing environments for people that impact how they live and work, by considering the psychological, emotional and physical needs** and how interior design can best meet these needs.
- There is a strong emphasis throughout the programme **on students developing concepts and producing design solutions that positively impact the environment** and which are sustainable, ethical, and socially responsible.
- Students are taught to **create interior design solutions for clients in the retail, hospitality, domestic, exhibition, services, corporate and specialist industries**.
- The principles, processes and techniques are used by students to create meaningful, relevant, effective and captivating interior environments and products.
- Students **are well-prepared as design practitioners** by completing 'live briefs' for industry clients, job shadowing and experiential learning opportunities.
- Basic research techniques, approaches, tools and methods are used for applied and academic purposes, and these are integrated into both visual and written projects, therefore equipping students for entry into postgraduate studies.
- Students **learn about emerging technologies, products and services and use the latest software**.

FOCUS AREAS

- Architectural Principles
- Interior Design
- CAD and 3D Software
- Drawing and Draughting
- Project Management
- Ergonomics





MAJORS

Social Design Major	Environmental Design Major	Commercial Design Major
<p>The social design major is concerned with how interior design can spatially address social justice related issues, using empathic and human centred design (HCD) approaches within a world that calls for designers to consider the Circular Economy and how designer's might impact the Sustainable Development Goals (SDGs). Graduates are able to design meaningful spaces that add value to society and allow for users to flourish in community while keeping in mind the circular economy .</p> <p>Themes and topics:Heritage, community centre design, rehabilitation, co-living, design for access, contextual design.</p>	<p>The environmental design major is concerned with the study of environmentally sensitive material types and building systems that consider what a future fit and sustainable interior space could be within a world that calls for designers to use Circular Economy principles, and positively impact the Sustainable Development Goals (SDGs). Students can expect to learn about designing sustainable and green interiors, how to implement the latest technologies and materials, as well as studying sustainable construction accreditation and environmental awareness. Graduates are able to design meaningful interior spaces that consider the impact of the built environment on the people, planet and the economy and how the three can live in harmony.</p> <p>Themes and topics: Design for wellness, eco-conscious design, sustainable interior design, design for disassembly, intelligent materials, passive design, eliminating waste, design innovation, retrofitting, low-impact products, circular economy</p>	<p>The commercial design major is concerned with spaces where business is conducted such as corporate design, retail design, hospitality design, service design and specialty design, and how these spaces can best suite the brand and business model within a world that calls for designers to consider the Circular Economy and Sustainable Development Goals (SDGs). Graduates are able to create responsible interior design solutions for clients that speak to functionality, profit and innovation.</p> <p>Themes and topics: Ergonomics, anthropometrics, design for innovation, materials, colours, and furnishings, branding of interiors, space planning.</p>



CAREER OPPORTUNITIES



Interior Designer
Interior 3D Rendering Specialist
Inclusive Design Specialist
Interior Stylist

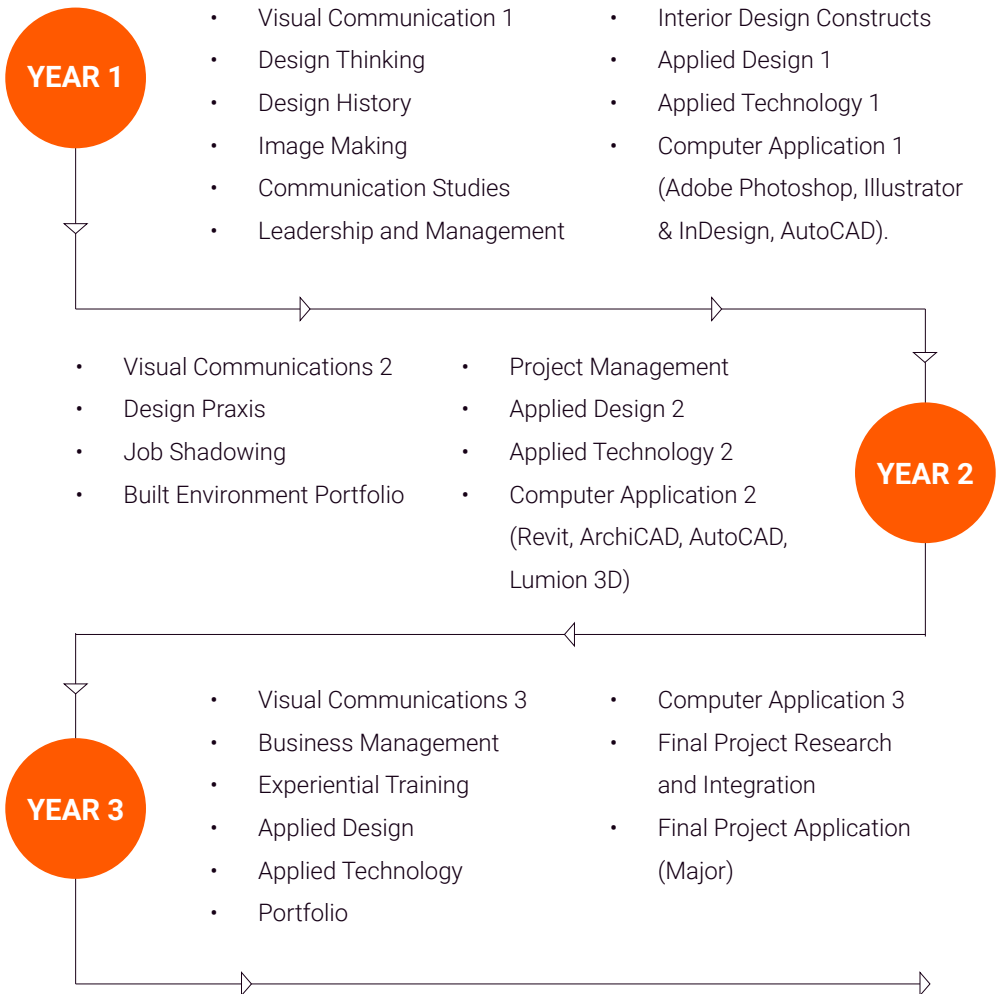
Furniture Designer
Exhibition Designer
Set Designer
Visual Merchandiser



Sustainable Interiors Specialist
Green Design Consultant
Sustainability Consultant in the
Built Environment



SUBJECTS



COURSE STRUCTURE



- ✓ 3 Years full time
- ✓ NQF level 7
- ✓ 8 x 1h 45 min sessions per week
- ✓ Approximately 2.5 hours additional independent study per session
- ✓ Job shadowing to be completed in the second year.
- ✓ 240 hours Experiential Training completed in the third year.
- ✓ Innovative assessment portfolio of evidence submitted in the third year.



ARTICULATION OPTIONS

Students who have graduated with the Bachelor of Design in Interior Design may apply for the Inscape BA Honours in Design if they have an average of over 60% in their final year of studies or may apply for the Advanced Diploma in User Experience at Inscape. Graduates may qualify for an Honours or Postgraduate Diploma in Interior Design or a related field. Institutional minimum requirements will apply.



SAQA ID: 116381
NQF 7 | 3 YEARS
CONTACT LEARNING



ENTRY REQUIREMENTS

South Africa

Candidates must have completed a National Senior Certificate (NSC) stipulating entrance to a bachelor's degree.

Or

Candidates who have an NQF level 6 qualification.

Or

Candidates who have completed a NQF level 5 qualification in a related field.

Students who have completed an Inscape Higher Certificate must have achieved an average of 60%.

If you have any queries regarding the process, please email - applications@inscape.co.za

Special Admissions

Mature age exemption

Candidates over the age of 23 who have completed Matric may qualify for mature age exemption.

Please contact the Registrar for additional information registrar@inscape.co.za

RPL

If the candidate has a NQF level 4 qualification, but has design industry experience, they may qualify for entry via Recognition of Prior Learning (RPL).

In order to be considered for entry via RPL the candidate should have a minimum of two years industry experience.

The RPL process is used to evaluate the learning that candidates with existing industry experience may have gained and would need to be substantiated with relevant supporting documents.

Please contact the Registrar for additional information registrar@inscape.co.za

International Students

If the candidate has a foreign qualification, for admissions to a bachelor's degree, they must apply to Universities South Africa (USAf) for a complete or conditional exemption certificate.

International candidates must be competent in English at an equivalent level to NQF 4.

All international students attending contact classes require a study permit in the name of Inscape Education Group valid for the duration of the chosen course.

Please contact the Registrar for additional information registrar@inscape.co.za

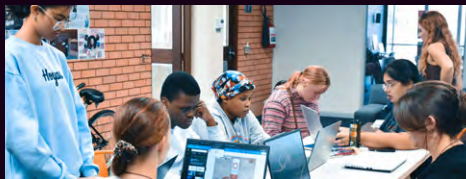


LEARNING HUBS



CAPE TOWN

1st Floor, 17 Salt River Road SALT RIVER



DURBAN

641 Peter Mokaba Ridge, MORNINGSID



MIDRAND

353 Alexandra Road, HALFWAY GARDENS



PRETORIA

193 Corobay Avenue, WATERKLOOF GLEN



STELLENBOSCH

Bosman's Business Centre, 1 Distillery Road,
Stellenbosch Central, STELLENBOSCH

APPLICATIONS

Phone (+27) 861 467 2273

Fax: (+27) 86 409 1627

applications@inscape.co.za

CENTRAL

PostNet Suite 104, Private Bag X19,
Menlo Park, 0102, SOUTH AFRICA

INSCAPE
APPLY NOW | [INSCAPE.AC](https://www.inscape.ac)

REGISTRATION AND ACCREDITATION

Inscape Education Group (Pty) Ltd is registered with the Department of Higher Education and training as a Private Higher Education Institution under the Higher Education Act, 1997 (reg no. 2000/HE07/002). Established in 1981. Company Reg: 2002/028979/07. VAT Reg: not applicable. Directors: HL Bührs and ME Schoeman.